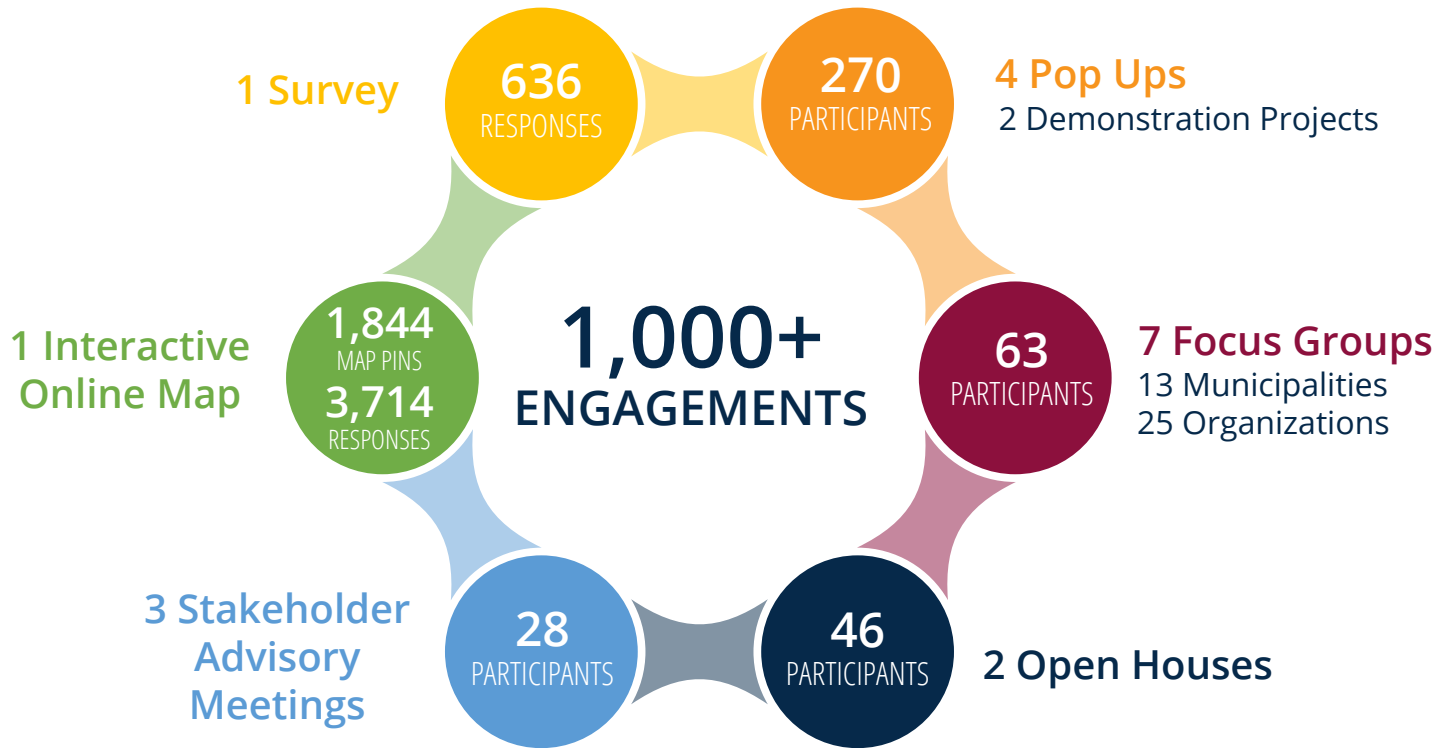


# PUBLIC OUTREACH FACT SHEET



## MOST FREQUENTLY NOTED CONCERNS



Inadequate  
**Pedestrian & Bicycle**  
Infrastructure

Vehicles Causing  
**Unsafe** Conditions



**Equity & Accessibility**



Desire for More  
**Public Transit**



**Increased Traffic**  
from Development  
& Goods Movement

We also heard concerns about:

- Parking**
- Roadway Maintenance**
- Improved Communication**
- Greening the Built Environment**
- Enforcement**
- Crime & Personal Safety**

# COMMON THEMES

Participants want more and better **pedestrian and bicycle infrastructure** – including crosswalks, complete sidewalks, recreational trails, and bike lanes.

Accessibility of **public transit** – including bus, train, light rail, and PATH – was a top concern for participants, especially for those in equity priority communities.

Participants want **equity** to be a priority – ensuring the needs of equity communities and all vulnerable road users are identified and equitably addressed.

Participants placed an emphasis on **sustainability** and how we can preserve, protect, and enhance the natural environment through green streets and green infrastructure.

Participants would like to see better **responsiveness** – how well they are engaged and how their concerns are addressed.

Participants want recommendations to advance the **economic wellbeing** of the County's residents and businesses.

Participants noted that the increase in **goods movement and freight traffic**, resulting from changes in consumer behavior, has meant more competition for curb space, heightened congestion, and increased wear and tear on roads.

## ENGAGEMENT TIMELINE

